

EN



# Solutions Overview

[hybridsoftware.com](https://hybridsoftware.com)

**HYBRID**  
SOFTWARE

The heartbeat of industrial  
printing and packaging.

-  Enterprise workflows
-  Native PDF editors
-  3D prototyping & visualization
-  Color management
-  Artwork management for brand owners
-  High-speed DFEs and RIPs
-  Printhead drive electronics
-  Core technology / SDKs

“LET’S TRANSFORM  
THE FUTURE OF  
LABELS AND PACKAGING  
TOGETHER.”

## Our mission

To be the leader in software and electronics for packaging and industrial printing, driven by the intelligence and passion of our people, speaking the language of our customers, by always being on the pulse of print.



## Integrating people, processes and tools

We are the IT people with labels and packaging knowledge as well as the labels and packaging people with IT competence.



We own 100% of the technology to power digital and conventional print production.



We're headquartered in Cambridge, UK, a leading technology hub for digital inkjet printing.



Our innovations and solutions are award-winning.



We offer a full suite of print software solutions—from pre-press to printhead drive electronics.

**PACKZ**

# All-in-one PDF editor for labels and packaging

**PACKZ** is an all-in-one prepress job editing and layout application for making label and packaging artwork ready for any printing process, digital or conventional.

**PACKZ MAX**

Achieve precise screening with **Harlequin RIP** inside of **PACKZ** for flexo plate creation, 1-bit TIFF output, and high-quality digital printing.

**PACKZ DIGITAL**

The complete and easy-to-integrate prepress software is perfect for digital printers looking to increase production efficiency and improve the quality of their prints.

## Why choose PACKZ?

- Effortless PDF editing
- User-friendly and intuitive interface
- Powerful prepress features for any printing process
- Customized tools for increased production efficiency
- Intelligent action lists in WYSIWYG view
- Reduced error rates and quality improvement
- Import and export data from external sources
- Seamlessly integrate with **CLOUDFLOW** production workflows
- In-app solutions store



### Faster prepress with fewer clicks

Gear up prepress production with the unique blend of automated actions and comprehensive range of prepress tools.



### Optimized quality control

Visually identify differences between versions and report print-specific issues using smart preflight presets.



### Roll and sheet layouts

Generate step and repeat rapidly with the full complement of step and repeat solutions for label, flexible packaging and folding carton.



### Variable Data Printing and Content XML

Produce unique seasonal packaging and personalized labels with the VDP wizard and generate artwork from XML markup language.



### Broadest 3D and warp offering in the industry

Non-destructive and accurate distortion of artwork for printing supreme-quality shrink sleeves and die-formed metal packaging.



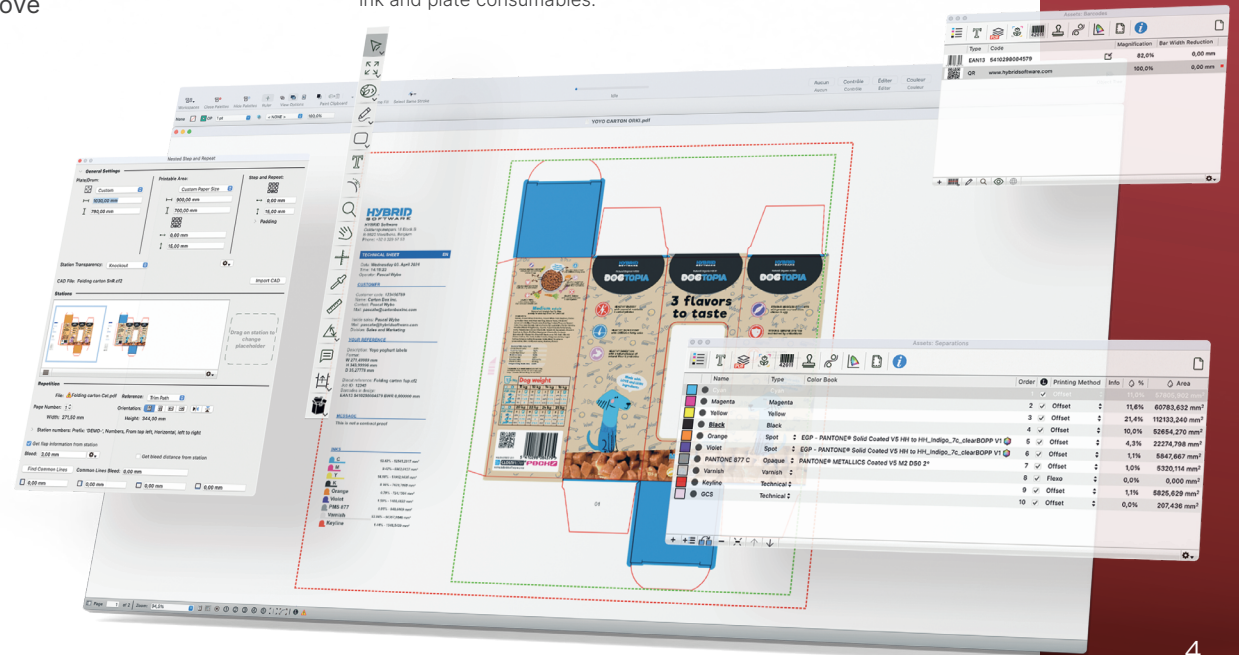
### Real-time screening quality control

Execute screening from the prepress editor to seamlessly ensure sharp dots, smooth gradients and accurate color reproduction.



### Colorspace premium color management solution

Match specific print conditions or get comprehensive insights into spot color performance by expanding the color gamut and intelligently reduce ink and plate consumables.



Want to  
know more  
about this  
product  
?







# Modular workflow automation suite for labels and packaging

**CLOUDFLOW** is a modular production workflow suite for file processing, asset management, soft proofing and workflow automation. It is a web-based application platform specifically tailored for the packaging graphics with support for PDF, color separation, trapping, screening, proofing and much more.

**MyCLOUDFLOW** offers print workflow automation in a hosted SaaS business model. Save time and cost with **MyCLOUDFLOW**'s easy implementation, 24/7 security, and centralized support.

## Why choose CLOUDFLOW?

- Modular architecture - combine a large variety of functional modules
- Power your prepress with industrial printing at full speed
- Award-winning screening and flexo plate layout technology
- Fastest RIP for packaging output
- Cost-effective color management solution for brand color matching
- On premise or CLOUD based
- **MyCLOUDFLOW** is setup in minutes and managed by Hybrid Software
- Open standards



### Prepress automation with Packzflow

Complete set of prepress functions, such as document preflight and correction, separation handling, barcodes, transformations, trapping, flattening and more.



### Collaborative approval workflow

Proofscope turnkey solution for soft proofing and collaboration. Feature advanced markup, measurement and annotation tools.



### High-speed native PDF RIPping

Fastest RIP for packaging output based on proven Global Graphics **Harlequin RIP™** technology.



### Centralized color management with Colorspace

Accurate color predictions and brand color matching with ultimate output routing flexibility to any print condition.



### Intelligent Flexo

Agnostic surface screening solution for high-quality flexo print that lowers ink consumption and increases print quality.



### Your smart print IT

Secured computing platforms operated by Hybrid Software, access point and strong data protection with **MyCLOUDFLOW**, the SaaS offering version of **CLOUDFLOW**.



Want to know more about this product ?







## Complete color management solutions

**ColorLogic** is a global leader in advanced color management, offering powerful tools for measurement data optimization, ICC profile creation, and color server automation. Its product suite—**ColorAnt**, **CoPrA**, and **ZePrA**—delivers precision, efficiency, and automation across workflows. **ColorLogic** solutions are also available as SDKs for easy integration, ensuring consistent, high-quality color in print, packaging, and digital media.



## Why choose ColorLogic?

- Flexible, customizable profiling solutions in any color space
- Based on ISO standards such as ICC and PDF for openness and flexibility
- Automatic and manual measurement data correction
- Compatible with leading color measurement devices
- Comprehensive profiling control center with multicolor and ECG options
- Supports major PDF/X standards for seamless production printing
- Detailed reporting and optimization capabilities
- Integrated workflow solutions for color conversion
- ZePrA technology is the heart of **CLOUDFLOW Colorspace's** color management

## Key products



### Color measurement

Measure, correct and optimize RGB, CMYK, Multicolor and ECG measurement data prior to profiling.



### Color profiling

Creates high-quality printer, DeviceLink and SaveInk profiles for any color space and printing process.



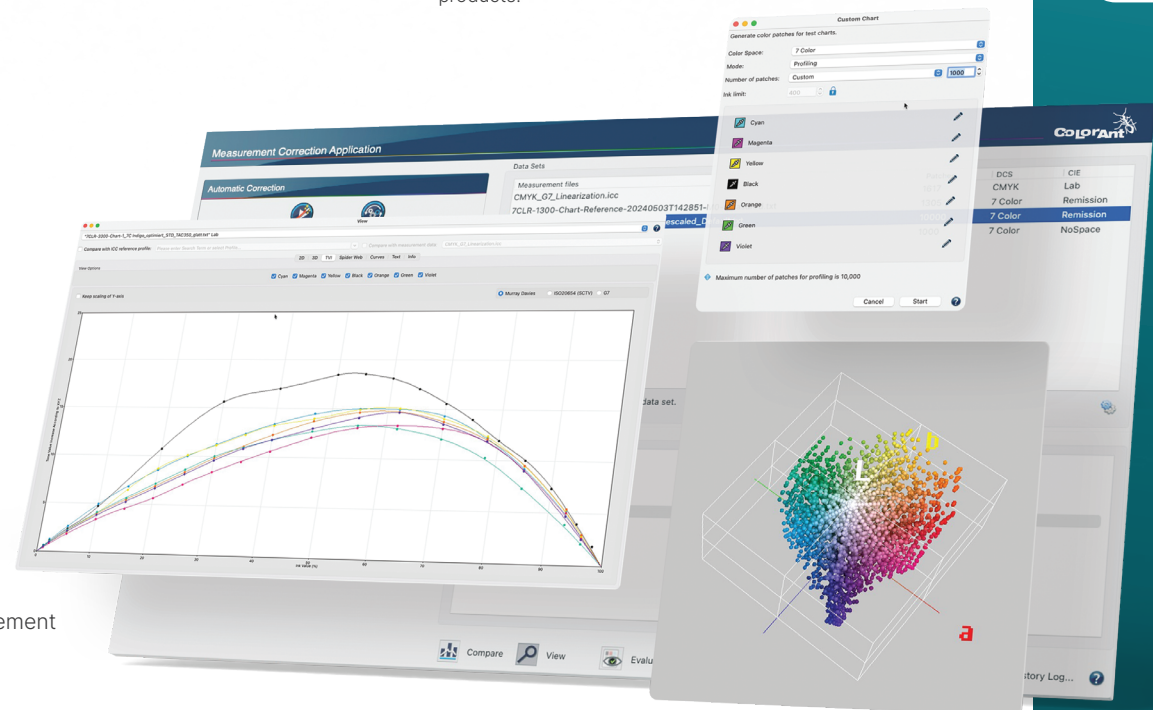
### Smart Color Server

Automates and optimizes PDF printing data and image files for efficient, high-quality printing workflows via DeviceLink profiles.



### Build solutions based on ColorLogic SDKs

**ColorLogic Core SDK** is a software development kit that allows developers to integrate ColorLogic's advanced color management technology into their own software products.



Want to know more about ColorLogic?  
↓





## Solutions for realistic product visualization and prototyping

iC3D's suite of tools modernizes the packaging design and visualization workflow by streamlining the entire packaging production process. Thanks to realtime ray tracing, create realistic product mockups from concept to completion on the fly.

### iC3D Suite

The complete 3D packaging design software solution for packaging design on the fly.

### iC3D Select

Software portfolio curated exclusively for brands and their product development and innovation process.

### iC3D Designer

Powerful, easy-to-use, packaging design tool for artwork managers and designers.

### iC3D Modeller

Robust, easy-to-use 3D modeling tool for designing containers, display units, and packaging components.

## Why choose iC3D?

- Photorealistic 2D and 3D packaging rendering
- Universal compatibility with advanced 3D file format support
- User-friendly interface and short learning curve
- Interactive with **PACKZ** for artwork application
- 3D digital asset management and collaboration tools
- Interactive 3D viewing and PDF warping



### Dynamic 3D modeling

Create 3D models of bottles, boxes, pouches, and other packaging types from scratch or template libraries.



### Real-time ray tracing

Render 3D packaging designs with high-resolution photo studio lighting, accounting for materials, reflections and shadows.



### Artwork and label application

Patented Smart Mesh technology allows for seamless application of graphics, labels, and designs to 3D models.



### 3D workflow automation

Streamline prototyping from approvals to production with the **CLOUDFLOW** enterprise workflow suite.



### Smart Shrink Wrap

Instantly visualize artwork on irregularly shaped products such as perfume bottles, trigger sprays and molded containers.



Want to know more about this product?

?



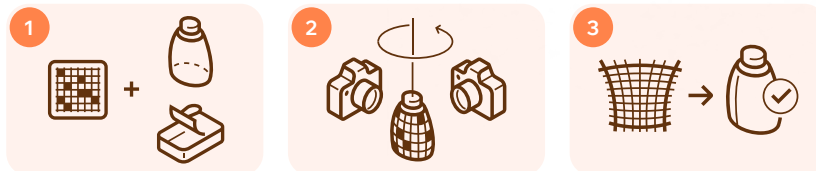


# CAPTURE 3D

## Solutions for scanning and artwork distortion

**Capture 3D** accurately captures the exact dimensions using reflex cameras for the creation of perfect deformation grids. The process is fast, accurate and entirely eliminates interactive measuring, reducing errors and the need for manual adjustments, and speeds up the grid creation and 3D modeling for metal cans and shrink sleeves.

### How does Capture3D work?



1 A unique pattern is applied on a shrink sleeve or a metal can.

2 Reflex cameras are used for an accurate 360° scanning of the model.

3 The 3D scan is used to create a unique distortion grid.

### Why choose Capture3D?

- Premier results for heat-wrapped shrink sleeve and metal cans
- 2D and 3D mapping for accurate deformation and modeling
- Interactive 3D viewing and PDF warping



#### Unique pattern technology

Create compensation grids quickly and check repeatability of shrink tunnels and metal can embossing machines.



#### Eliminate deadzones

Ensure key branding artwork elements and product information remain clear and legible.



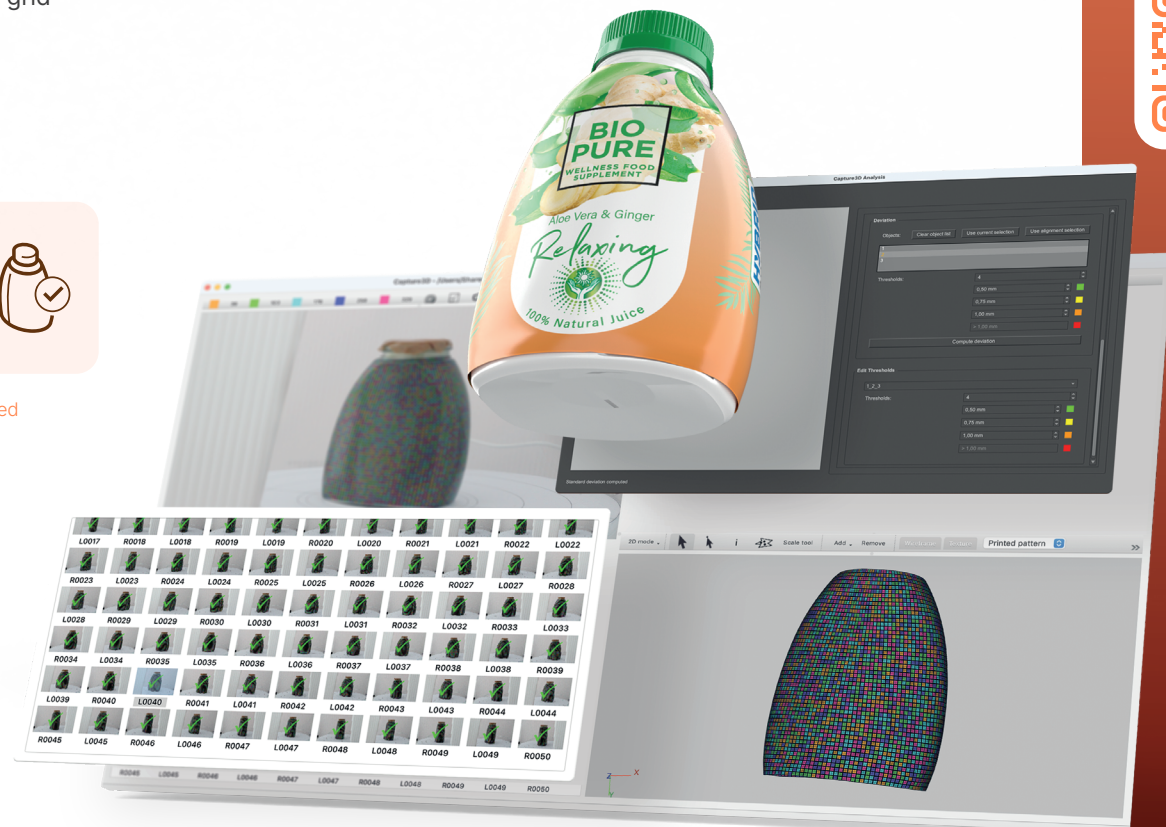
#### Accelerate your 3D modeling workflow

Capture all cupping draws of the final cup-shaped product and expedite 3D modeling.



#### 2D artwork distortion and 3D modeling

Incorporate anisotropy for precise analysis and optimization of artwork deformation using **PACKZ** and **ic3D's** Live 3D preview.



Want to know more about this product?







# Artflow

## All-in-one platform to manage the packaging artwork process

**Artflow** is a cloud-based SaaS platform designed specifically for brand owners, retailers, and CPG companies to simplify and accelerate packaging artwork management—from concept to production. It centralizes assets, automates approvals, and enhances collaboration, reducing time to market and minimizing errors.

With features like project management, task tracking, and KPI dashboards, **Artflow** ensures brand consistency and efficient workflows. Trusted by global brands, it's the all-in-one solution for packaging design excellence.

### Why choose Artflow?

- Cut project time by 75% with smart, automated workflows
- Speed up approvals and eliminate revision delays
- Keep brand assets and versions consistent, always
- Collaborate faster with centralized files and briefs
- Track every step with built-in audit trails and KPIs



#### Project management

Custom templates, task workflows, translations, auto checks, and KPI dashboards—all in your browser.



#### User-friendly interface

Work fast with pre-filled timings, job cloning, stakeholder requests, and intuitive navigation.



#### Advanced proofing

Compare versions pixel by pixel, verify text, annotate clearly, and run automated quality checks.



#### Approval processes

Use parallel/sequential workflows with validation invites and in-portal task notifications.



#### Partner integration

Connect to ERP, PIM, DAM, TVT, and any API via standard connectors for seamless collaboration.



#### 3D visualization

Link to **IC3D** for photorealistic renders and packshots that speed up product design.



Want to know more about this product?





## Intelligent Digital Front End for high-speed digital presses

**SmartDFE™** is a Digital Front End for high-speed, single-pass presses printing fully variable data. Built upon **Harlequin Direct™**, the world's fastest PDF RIP, it provides rasterization and inkjet drop generation for the best-possible image quality and quickest printing speeds.

Its automation capabilities provide complete control of the print workflow as well as valuable information for QA and inspection, press maintenance and stock control.



### Why choose SmartDFE?

- Built using **Harlequin Core™**, the fastest RIP engine available
- Includes print intelligence, giving you industry-leading quality without the PhD
- Streamlines your solution with a single supplier
- Accelerate to market with our free Breakthrough Service
- Offers universal support for printhead drive electronics
- Supports Industry 4.0 enabling secure connectivity across the production environment



#### Easy-to-use workflow and prepress tools

Transform customer requirements into optimized press-ready PDFs.



#### Fully customizable

A fully customizable Digital Front End that adapts to your brand requirements.



#### Secure connectivity

Powered by OPC UA to ensure robust and secure interactions with devices and applications in the press.



#### Boost productivity

AI-based, patented RIP tuning technology estimates achievable line speed, and tunes the RIP on a job-by-job basis, saving waste and increasing productivity.



#### Excellent print quality

Advanced technologies like **PrintFlat™**, **ScreenPro™**, and **ColorLogic** make it easier for any operator to achieve excellent print quality.



#### Link to inspection systems

Streamline data directly to industry-standard, inline quality inspection systems.



Want to know more about this product?



**HARLEQUIN™**

## The fastest RIP core available

**Harlequin Core™** is a Raster Image Processor (RIP). It converts text and image data from many file formats including PDF, TIFF™ or JPEG, into rasters that a printing device understands.

It produces unmatched quality without sacrificing speed, which means that printing devices that incorporate **Harlequin** can be kept running at full rated speed, even on the most complex jobs, without incurring high costs for computing hardware. **Harlequin** is available as a Software Development Kit, if you wish to build your own solution.

## Why choose Harlequin?

- Industry leading - **Harlequin Core™** is the fastest RIP Core available
- Offers extreme performance using scalable RIP farm
- Reduces costs - a faster RIP requires less computing hardware
- Optimizes energy efficiency, resulting in reduced power consumption for a DFE
- Award-winning, trusted for over 30 years
- Faster printing of Variable Data files



### Flexible input and output

Prints PDF, PNG, TIFF, JPEG and can export rasters and technical & structural contours.



### Fast Variable Data printing

Uses **Harlequin VariData™** to accelerate the speed of variable data PDF files.



### Extensive compatibility

Complies with a wide range of print-related standards, including PDF 2.0, PDF/X-6, PDF/VT-3 and ICC.



### Exceptional color management and high-quality screening

Achieves accurate, consistent and predictable brand color emulation while guaranteeing high-quality image reproduction every time.



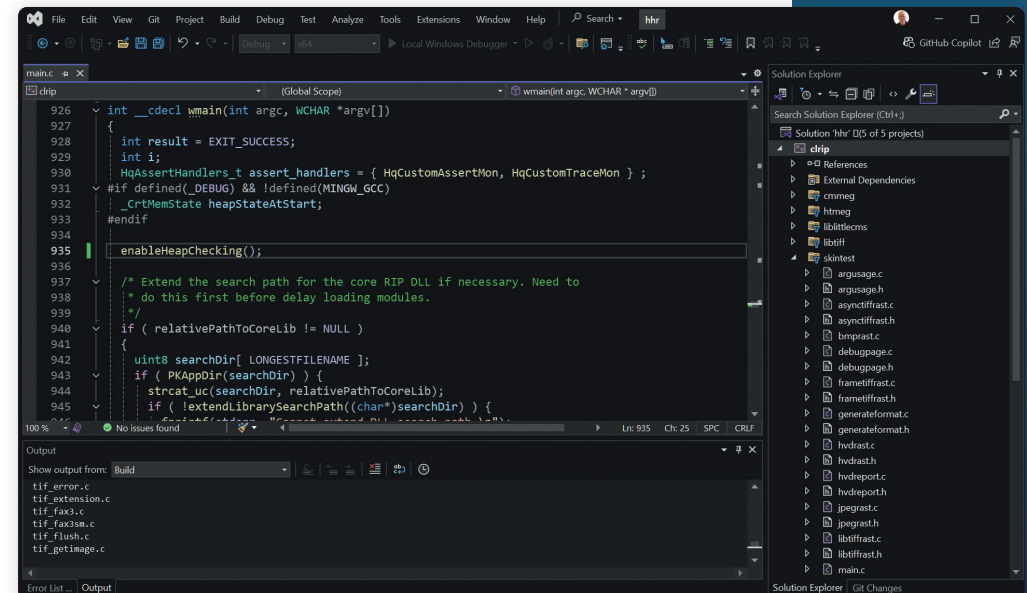
### Cross-platform support

Supports Mac Silicon, Windows 11 and Linux (Redhat and Ubuntu).

Industry-leading **Harlequin Core™** optimizes energy efficiency and reduces costs.



Want to know more about this product ?







## At the core of smart print applications

**Mako Core™** is a print SDK that meets the unique needs of the print industry. It is designed for software developers who need to create print workflow components to interrogate, manage, change or convert documents in applications such as commercial, high-volume printing or enterprise print management.

**Mako** has decades of print knowledge and expertise encapsulated within its intelligent DOM. It is suited to building custom, high-performance prepress solutions yet is equally adept in interactive desktop and web applications, where fast, high-quality visualization is required.

### Why choose Mako?

- High-speed handling of large documents, gigabytes of data and millions of pages
- **Apex-Ready**, giving you access to the world's first fully GPU-native PDL renderer
- Extended gamut support and precision color management, supported by **ColorLogic CMM**
- Fully compliant with PDF ISO standards like PDF/X
- Unlock savings by consolidating your document processing with a single, multi-PDL SDK
- Seamless integration with **Mako's** APIs for multiple coding languages
- Cross-platform development for cloud, mobile and desktop



#### Fast rasterization

Swiftly render any page to a raster and save to the image format of your choice with built-in encoders.



#### Seamless PDL conversion

Effortlessly convert between different PDLs.



#### Innovative graphics engine

Create new print solutions using Mako as a powerful graphics engine.



#### PDF viewing with precision

View PDFs with accurate overprint simulation.



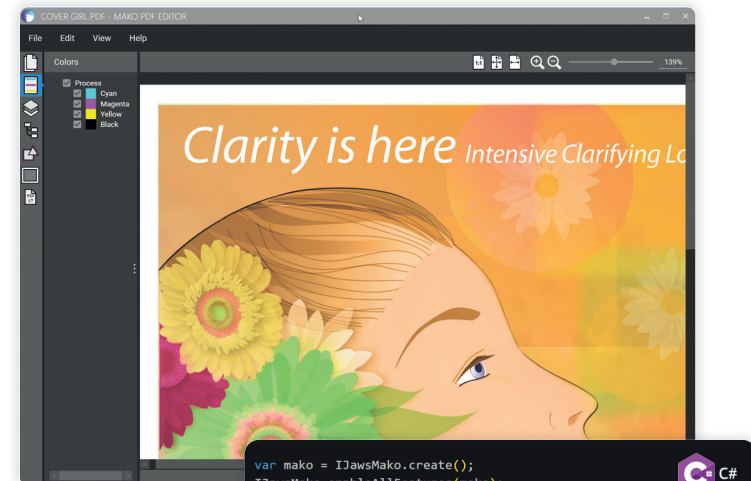
#### PDL preflight and optimization

Streamline PDLs through preflighting and optimization.



#### Dynamic document creation

Generate new documents, such as brand new PDFs from variable data.



Simplify integration with **Mako's** APIs across multiple programming languages.



```
var mako = IJawsMako.create();
IJawsMako.enableAllFeatures(mako);

// Input
var assembly = IPDFInput::create(mako)->open("myfile.pdf");
var pageContent = assembly->getDocument()->getPage()->getContent();

// Render
var renderer = IJawsRenderer::create(mako);
const auto renderedImage = renderer->render(pageContent);
IDOMPNGImage::encode(mako, renderedImage,
    IOutputStream::createToFile(mako, "rendered.png"));
```



Want to know more about this product ?  
↓





## Industrial Inkjet Solutions

**Meteor Inkjet** is the world's leading independent supplier of industrial inkjet printhead drive electronics and software.

With a world-class team of electronics, software, systems and support engineers, **Meteor** is trusted by leading printhead manufacturers and print system builders alike.

### Why choose Meteor?

- Advanced datapath solutions for printers of any size or complexity
- Scalable architecture from prototype to production
- Ability to drive different printhead types in a single system
- The world's largest range of printhead drive electronics
- Configurable Digital Front Ends for single-pass or scanning
- Software Development Kits to create bespoke solutions
- Technologies for printer calibration and print quality enhancement
- DropWatchers for evaluating and optimizing printhead and ink combinations
- Printhead waveform development services

### Printhead Controllers

Production-ready, scalable drive electronics for all leading industrial inkjet printheads.

### Software

Complete suite of solutions for system control, print job creation and image quality enhancement.

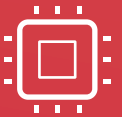
### Tools & Services

DropWatchers and printhead waveform development services for ink characterisation, print reliability analysis, printhead evaluation and print process development.

### Industrial Markets

Global customer base serving a wide variety of applications:

- 3D & additive manufacturing
- Automation & robotics
- Book printing
- Décor
- Direct-to-Shape
- Functional & security printing
- Glass printing
- Labels & packaging
- Pharmaceutical
- Signs & displays
- Textiles



Want to  
know more  
about  
Meteor's  
solutions

?





## Software to power prepress and printing departments

Xitron has been developing prepress software and solutions for nearly 50 years. Our mission is to engineer intuitive, productive, and affordable alternatives capable of driving output devices manufactured by the most popular vendors on the market today.

Whether your printing business is Offset, Flexo, Screen Printing, or high-speed digital, **Xitron** RIPs and workflows are powerful, economical, trusted solutions.

### Why choose Xitron?

- Economical prepress RIPs & workflows for all print markets
- Off-the-shelf DFE for OEM Development
- Simple, intuitive GUI
- Scalable systems
- 100% **Harlequin Core™** based solutions
- Perpetual licenses available

### Key products



#### Navigator RIP

From start-ups to multi-national corporations, **Navigator** provides fast, accurate rendering for virtually any output device.



#### K2

Full-stack commercial prepress workflow designed to replace aging systems such as Prinergy, XMF, Apogee, Prinect, RealPro or Rampage with NO SUBSCRIPTION.



#### Navigator DFE

Designed to work with virtually any printhead, **Navigator DFE** is scalable, driving everything from desktop envelope printers to high-speed production presses with speeds of over 900 fpm with and without variable data.



#### Navigator Flexo Suite

Designed to take advantage of the new economical flexo CTP engines, **Flexo Suite** offers a complete array of workflow tools specifically developed for flexo platemaking. This includes the patented SmartFlexo screening module that provides stunning solid ink density results with no pinholes and reduced trailing edge void.



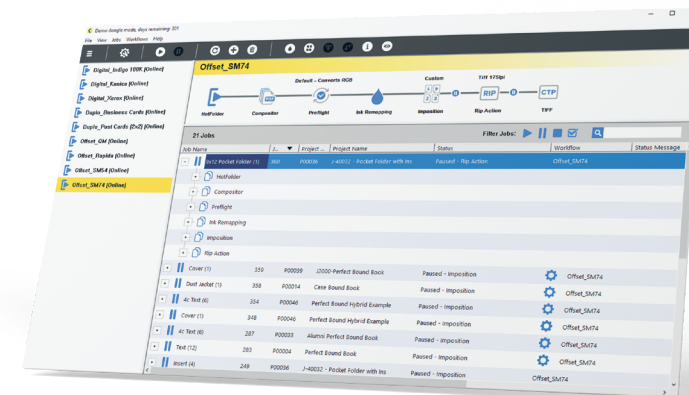
#### Navigator SP

**Navigator SP** provides an excellent foundation for direct-to-screen devices, including RIP, workflow, best-in-class job preview, and easy-to-use interlocking screens.



#### Raster Blaster

Developed to allow any workflow to work with any CTP device, **Raster Blaster** and the USB interface allow printers to choose their prepress workflow and preferred output engines independently.



Want to know more about Xitron's solutions?





[illegible][illegible]



HYBRID Software PLC  
Euronext: HYSG



hybridsoftware.com  
T: +32 9 329 57 53



colorlogic.de/en  
T: +49 5971 401016-0



globalgraphics.com  
T: +44 1954 283100



meteorinkjet.com  
T: +44 34 5844 0012



xitron.com  
T: +1 (734) 913-8080